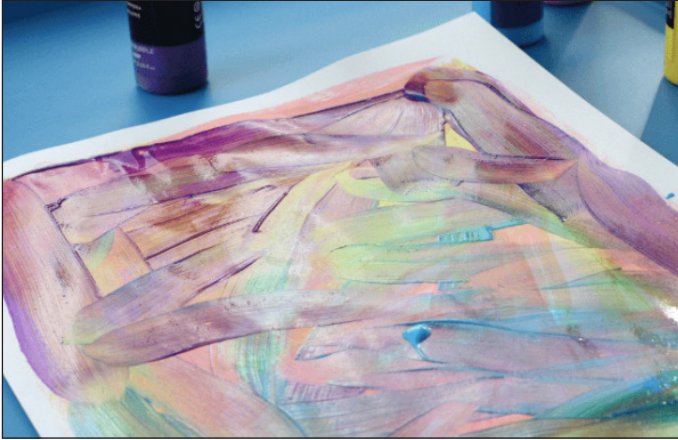
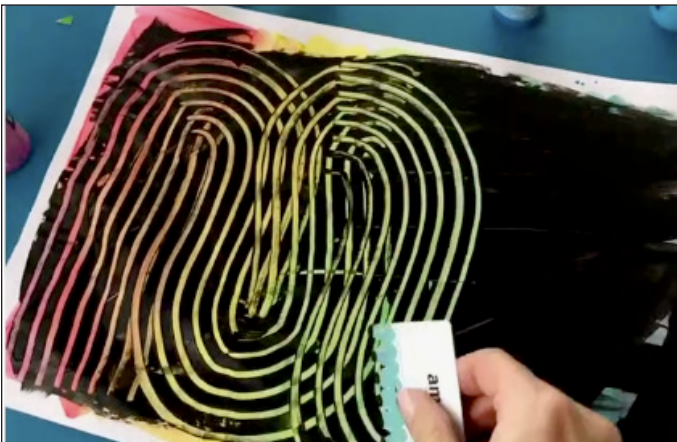


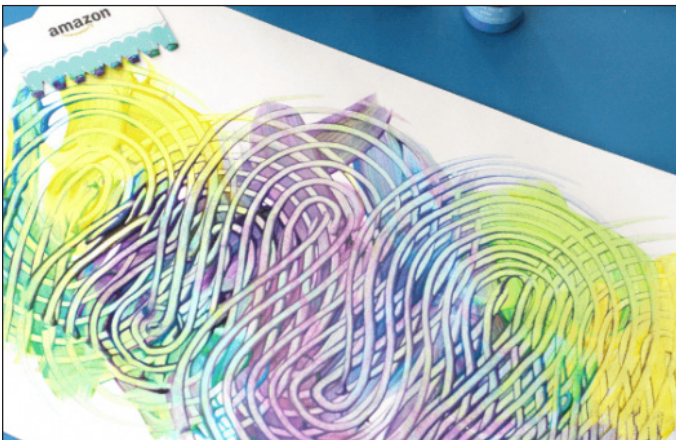
Texture Painting



Paint a base color on a sheet of paper or cardstock with acrylic paint and a paint brush. Let dry completely. Cut notches in an old gift card to use as a paint scraper.



Layer a different paint color over top of the first paint layer. While the paint is wet, use the paint scraper to scrape the wet paint away revealing the base color.



Repeat steps on clean paper and try different color combinations.